

**XINGHANG**

Installation  
References

**DN15-DN40**

Ultrasonic  
Water Meter



# » Introduction

**XINGHANG**

---

This document serves as a standardized installation reference for the DN15-DN40 ultrasonic water meter, covering two core application scenarios: outdoor field installation and indoor pipe shaft installation. It details applicable environments, IP68 protection grades, communication protocols, power supply configurations and key technical parameters. Supported with installation diagrams, this guide helps engineering and construction teams implement accurate, compliant and long-term stable installation.

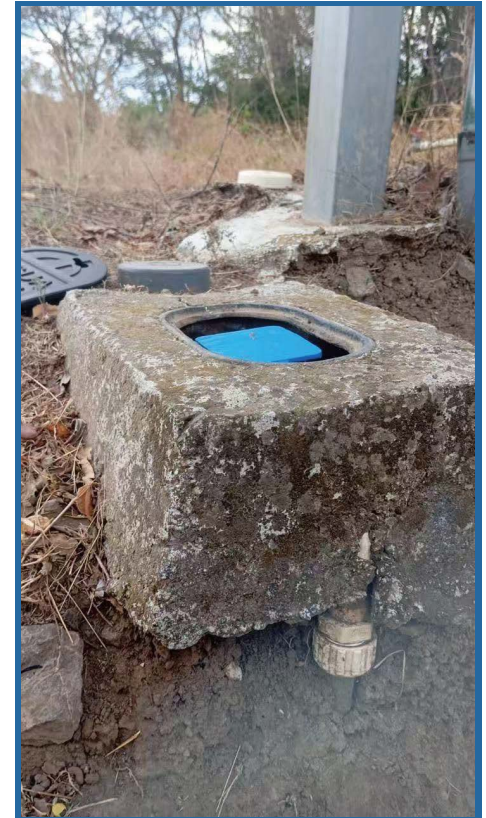
Field photos show actual application scenarios overseas

# » Outdoor Installation

## Application Environment

This ultrasonic water meter is optimized for outdoor installation, including concrete pits, plastic protective enclosures and wall-mounted cabinets.

It supports partial or full exposure to external weather conditions. With IP68 ingress protection, it enables continuous submersion and reliable operation in harsh buried environments.



## Communication & Power

- LoRaWAN: US915 / AU915 / EU868 / IN865 / AS923 and global bands support; support OTAA / ABP; adjustable transmission interval (e.g., every 4 hours).
- NB-IoT / 4G CAT-1: LTE cellular network connection.
- Power supply: ER26500 / ER34615 lithium battery.
- Accuracy: R400.
- Battery life: 10-15 years.

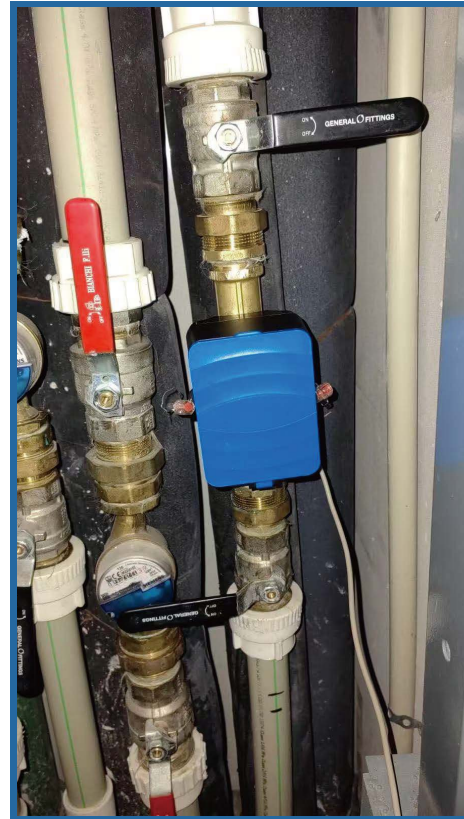
# » Indoor Pipe Shaft Installation

## Application Environment

Designed for vertical pipe shafts in residential and commercial buildings. Adapts to confined, humid and occasionally submerged pipe shaft conditions. IP68 protection ensures moisture resistance and stable long-term indoor operation.

## Communication & Power

- Optional interfaces: RS-485 Modbus / M-Bus / Wireless M-Bus / LoRaWAN.
- RS-485: Baud rate 2400 / 9600 / 19200;  
1 reading per second with external 24VDC power.
- Power supply: ER26500 / ER34615 lithium battery.
- Accuracy: R400.
- Battery life: 10-15 years.



# » Conclusion

**XINGHANG**

---

This installation reference covers all mainstream indoor and outdoor applications of the DN15-DN40 ultrasonic water meter.

Users can select the appropriate installation mode, communication solution, and power configuration based on actual field conditions.

All specifications strictly follow the original product standards, ensuring safe and compliant installation while optimizing meter service life and measurement stability across diverse operating environments.